

A Pic A: Before installation, firstly, to open a hole (Dia:85~87mm) of the panel, make sure there is a space with (70mm backyard of panel) as well and promise the back of panel has at least 70mm space.



B PicB: Twist off the cover then put the gauge in hole

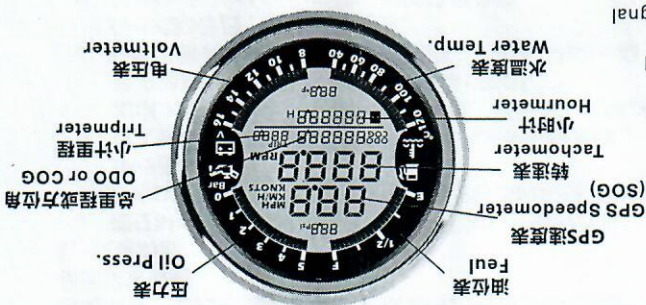


C Pic C: Mount the gauge in hole, twist the back cover on after adjustment.

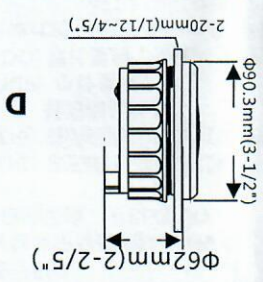


GPS installation instructions/天线安装说明:

GPS天线正面安装: Installed in front: 此面要求是塑胶或不能屏蔽GPS信号的材质. 此表面不是塑料或可以屏蔽GPS信号的材料. 一般安装方式: 可能收不到GPS信号. 最好的安装方式: 可能收不到GPS信号. 不能接收GPS信号. 反向安装GPS天线: 反向安装GPS天线. General: 可能收不到GPS信号. 不能接收GPS信号. Best: 可能收不到GPS信号. 不能接收GPS信号.



Pic D: Size and annotations 如D图, 关于外形尺寸标注说明



仪表基本说明: 1. 转速表显示范围: 0-9999 2. 速度表显示范围: 0-999 3. 温度表显示范围: 40-120°C (104-248) 4. 压力表显示范围: 0-5Bar (0-72.5Psi) 或 0-10Bar (0-150Psi) 5. 总里程显示范围: 0-99999.9 6. 小时计显示范围: 0-99999.9 7. Trip里程显示范围: 0-999.9

Multifunction Instruction: 1. Range of tach: 0~9999 RPM 2. Range of speed: 0~999 km/h, MPH, Knots 3. Range of water temp: 40~120°C (104~248F) 4. Range of pressure: 0~5bar (0~72.5psi) or 0~10bar (0~145psi) 5. Range of ODO: 0~99999.9 km, miles, knots 6. Range of hours: 0~99999.9 hours 7. Range of trip: 0~999.9 km/h, MPH, Knots

转速表速比调整说明:

1) 速比可调范围: 1-300. 2) 如果您的传感器安装在飞轮盘上, 速比值等于发动机齿轮数; 如果转速信号取自W点信号, 速比值等于电极数的一半 (Poles/2)

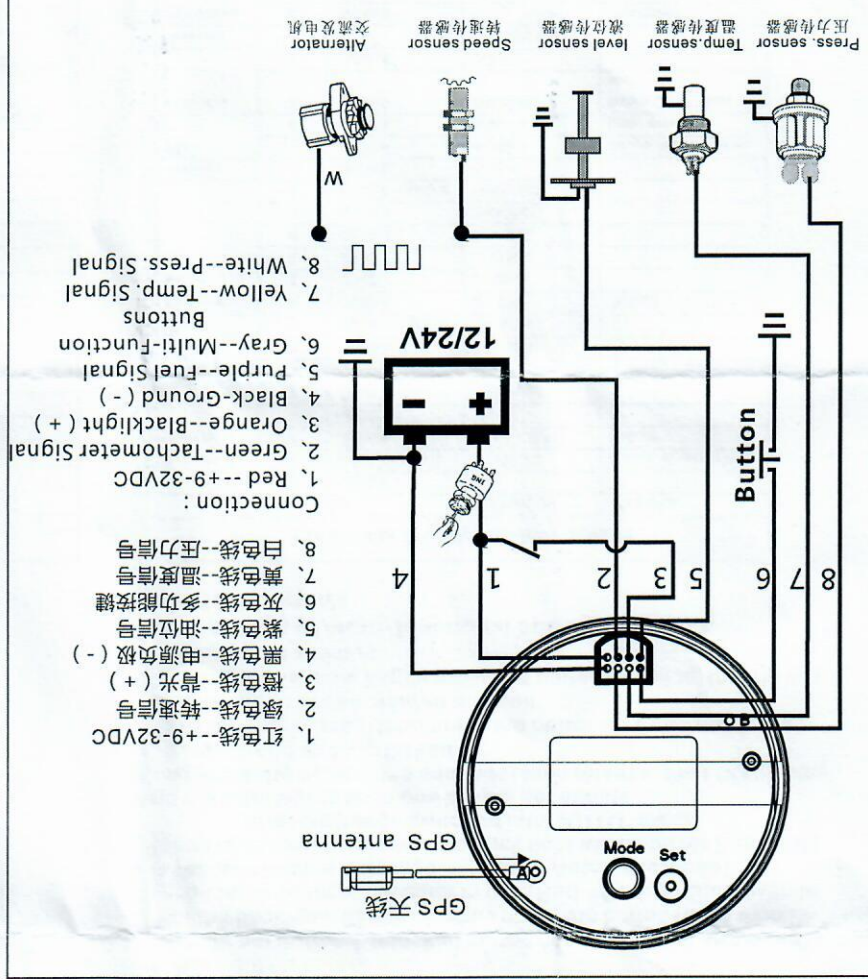
典型速比设置参考:

燃油发动机	柴油发动机	缸数	冲程	速比
4	4	4	2	2
4	4	4	3	3
6	4	4	3	6
8	4	4	4	8
10	4	4	5	10
12	4	4	6	12

Speed ratio: 1) Range of speed ratio: 1.0-300.0; 2) If your transmitter is installed on the flywheel, come from w point signal, the ratio value is equal to half electrodeplate (Poles/2). If it is the gasoline engine, the speed ratio is equal to the number of cylinders (cylinder/2).

Outboard	Inboard or Gas engine	gear number	speed ratio
12	6	4	6
10	5	4	5
8	4	4	4
6	3	4	3
4	2	4	2

E 接线图 Wires Connecting



- Connection:**
1. 红色线--+9-32VDC
 2. 绿色线--转速信号
 3. 棕色线--背光 (+)
 4. 黑色线--电源负极 (-)
 5. 灰色线--多功能按键
 6. 紫色线--燃油信号
 7. 黄色线--温度信号
 8. 白色线--压力信号
- Buttons:**
1. Red--+9-32VDC
 2. Green--Tachometer Signal
 3. Orange--Blacklight (+)
 4. Black-Ground (-)
 5. Purple--Fuel Signal
 6. Gray--Multi-Function
 7. Yellow--Temp. Signal
 8. White--Press. Signal